



**REPLACEMENT RESIDENTIAL  
AUTOMATIC SPRINKLERS  
GL4230, GL5630, GL5631  
HORIZONTAL SIDEWALL**

**DESCRIPTION AND OPERATION**

The Globe GL Series Residential Sprinkler is a low profile yet durable design which utilizes a 3mm frangible glass ampule as the thermosensitive element. It features both economy and aesthetics.

The combination of the 3mm frangible glass ampule and specially designed deflector make the GL Series Residential Sprinkler the ultimate in life safety and fire control. The Globe Horizontal Sidewall Series of the GL Series Residential Sprinklers have met the strict requirements of Underwriters Laboratories Inc. as described in the UL Standard for Residential Sprinklers for Fire Protection Service, UL 1626, and should be used accordingly.

The heart of Globe's GL Series sprinkler proven actuating assembly is a hermetically sealed frangible glass ampule that contains a precisely measured amount of fluid. When heat is absorbed, the liquid within the bulb expands increasing the internal pressure. At the prescribed temperature the internal pressure within the ampule exceeds the strength of the glass causing the glass to shatter. This results in water discharge which is distributed in an approved pattern depending upon the deflector style used.



**MODELS GL4230 & GL5630  
RESIDENTIAL  
HORIZONTAL SIDEWALL**



**MODEL GL5631  
RESIDENTIAL  
HORIZONTAL SIDEWALL**

**TECHNICAL DATA**

- See reverse side for Approvals and Specifications.
- Temperature Rating - 155°F (68°C).
- Water Working Pressure Rating - 175 psi (12 Bars).
- Factory tested hydrostatically to 500 psi (34 Bars).
- Maximum low temperature glass bulb rating is -67°F (-55°C).
- Frame - bronze • Deflector - brass • Screw - brass
- Bulb seat - copper • Spring - nickel alloy • Seal - teflon
- Bulb - glass with alcohol based solution, 3mm size.
- Escutcheon Assembly - steel

**• SPRINKLER TEMPERATURE RATING/CLASSIFICATION and COLOR CODING**

CLASSIFICATION	AVAILABLE SPRINKLER TEMPERATURES	BULB COLOR	N.F.P.A. MAXIMUM CEILING TEMPERATURE
ORDINARY	155°F      68°C	RED	100°F      38°C

# REPLACEMENT RESIDENTIAL AUTOMATIC SPRINKLERS GL4230, GL5630, GL5631 HORIZONTAL SIDEWALL

## SPECIFICATIONS AND APPROVALS

SIN MODEL	K FACTOR	THREAD SIZE	LENGTH	FINISHES	155°F (68°C)	cULus	NYC - DOB MEA 101-92-E
GL4230	4.2 (59 metric)	1/2" NPT	2 1/4" (5.7 cm)	Factory Bronze *Satin Chrome Bright Chrome	X	X	X
GL5631	5.6 (80 metric)	1/2" NPT	2 1/4" (5.7 cm)	White Polyester+ Black Polyester+ *Lead Coated	X	X	---

NOTE: METRIC CONVERSIONS ARE APPROXIMATE.

\*FINISHES AVAILABLE ON SPECIAL ORDER.

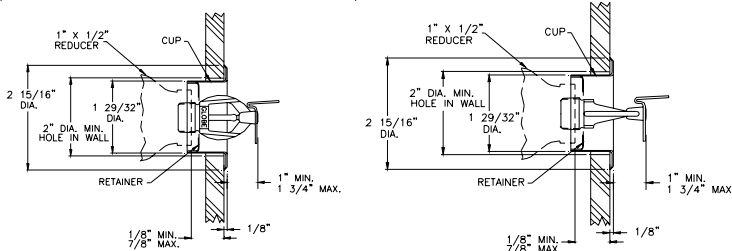
+AVAILABLE AS UL LISTED CORROSION RESISTANT WHEN SPECIFIED ON ORDER.

## INSTALLATION DATA

### HORIZONTAL SIDEWALL AND RECESSED HORIZONTAL SIDEWALL SPRINKLER

MAXIMUM AREA OF COVERAGE	DEFLECTOR STYLE	MINIMUM WATER DISCHARGE & PRESSURES NEEDED	
		SINGLE SPRINKLER	TWO SPRINKLERS
12' x 12'	GL4230	4.2 K FACTOR - 19 G.P.M. - 20.5 P.S.I.	14 G.P.M. - 11.1 P.S.I. (EACH)
	GL5630	5.6 K FACTOR - 20 G.P.M. - 12.8 P.S.I.	15 G.P.M. - 7.2 P.S.I. (EACH)
	GL5631	5.6 K FACTOR - 18 G.P.M. - 10.3 P.S.I.	15 G.P.M. - 7 P.S.I. (EACH)
14' x 14'	GL4230	4.2 K FACTOR - 21 G.P.M. - 25 P.S.I.	16 G.P.M. - 14.5 P.S.I. (EACH)
	GL5630	5.6 K FACTOR - 23 G.P.M. - 16.9 P.S.I.	17 G.P.M. - 9.2 P.S.I. (EACH)
16' x 16'	GL4230	4.2 K FACTOR - 24 G.P.M. - 32.7 P.S.I.	19 G.P.M. - 20.5 P.S.I. (EACH)
	GL5630	5.6 K FACTOR - 24 G.P.M. - 18.4 P.S.I.	20 G.P.M. - 12.8 P.S.I. (EACH)
16' x 18'	GL5631	5.6 K FACTOR - 30 G.P.M. - 28.7 P.S.I.	22 G.P.M. - 15.4 P.S.I. (EACH)
16' x 20'	GL5631	5.6 K FACTOR - 35 G.P.M. - 39.1 P.S.I.	26 G.P.M. - 21.6 P.S.I. (EACH)

## CROSS SECTIONS



GL4230 & GL5630

GL5631

RECESSED HORIZONTAL SIDEWALLS

## ORDERING INFORMATION

### SPECIFY

- Quantity • Model Number • Style
- Orifice • Temperature • Finishes desired
- Quantity - Wrenches - P/N 325390
- Quantity - Recessed Wrenches - P/N 325391, Rev. F (GL4230, GL5630); P/N 327102 (GL5631)
- Quantity - Protective Caps - P/N 327109-CAP (Friction Fit Recessed)

## GLOBE® PRODUCT WARRANTY

Globe agrees to repair or replace any of its own manufactured products found to be defective in material or workmanship for a period of one year from date of shipment.

For specific details of our warranty please refer to Price List Terms and Conditions of Sale (Our Price List).



4077 AIRPARK DRIVE, STANDISH, MICHIGAN 48658

989-846-4583

FAX 989-846-9231

1-800-248-0278

www.globesprinkler.com