

Water Spray Nozzle

Water spray nozzle is specially designed to spray the water in fog-like droplets in order to prevent the fire expansion. Used for water spraying fire extinguishing system, water spray nozzle will be installed differently based on the shape, structure, nature, and quantity of the target object as well as the handling method. Paradises' water spray nozzle will be an ideal solution for fire suppression and expansion prevention for the dangerous material storage, fuel storage, chemical plant, special industrial facility and etc.



FSNS Series



FSNA-E Series



FSNI Series



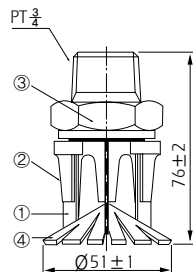
FWC Series

Specification

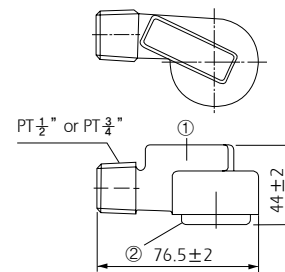
Model No.	Spray Type	Angle	Thread	Nozzle K Value	Flow Rate at 3.5kgf/cm ² (Q /min)
FSNS50	Full Cone	120°	PT 3/4"	-	50
		140°	PT 3/4"	-	50
FSNS100	Full Cone	120°	PT 3/4"	-	100
FSNA	Full Cone	90°	PT 1/2"	21	40
		120°	PT 1/2"	21	40
FSNAX	Full Cone	90°	PT 1/2"	27	50
		120°	PT 1/2"	27	50
FSNB	Full Cone	90°	PT 1/2"	37	70
		120°	PT 1/2"	37	70
FSNC	Full Cone	90°	PT 1/2"	53	100
		120°	PT 1/2"	53	100
FSND	Full Cone	90°	PT 1/2"	70	130
		120°	PT 1/2"	70	130
FSNE	Full Cone	140°	PT 3/4"	91	170
FSNI 70	Full Cone	90°	PT 1/2", PT 1"	-	70
FSNI 100	Full Cone	90°	PT 1"	-	100
FSNI 130	Full Cone	90°	PT 1"	-	130

Model No.	Spray Type	Angle (Adjustable)	Thread	3.5kgf/cm ²	
				Flow Rate (Q /min)	Height (M)
FWC A	Flat	0~180°	PT 1 1/2", NPT 1 1/2"	530	15
FWC B	Flat	0~180°	PT 1 1/2", NPT 1 1/2"	1350	15

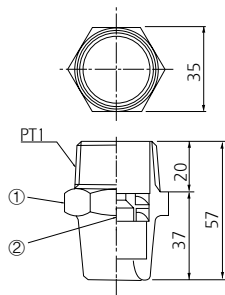
Assembly Diagram



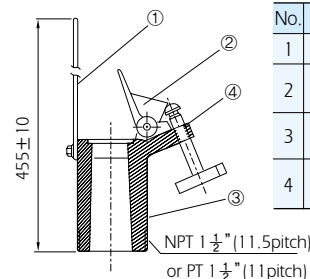
No.	Part	Material
1	Deflector Support	STS
2	Frame	Forged Brass
3	Deflector Fix.	Brass
4	Deflector	Brass



No.	Part	Material
1	Body	Cast Bronze
2	Insert	Brass



No.	Part	Material
1	Body	Brass
2	Spiral	Brass



No.	Part	Material
1	Deflector	STS
2	Flapper	Cast Bronze
3	Body	Cast Bronze
4	Cont. Valve	Brass