

Sprinkler

Flush Type Sprinkler

Paradise Flush type sprinkler has the protective cap protecting the sprinkler head from any external impact during transport and installation. It uses teflon sheet that has greater sealing and elasticity instead of copper plate gasket. Compact in size and aesthetically pleasing, it is widely used for apartment, hotel, theater, department store, hospital and multi-purpose building.



FH721(722)-1



FH721(722)-2

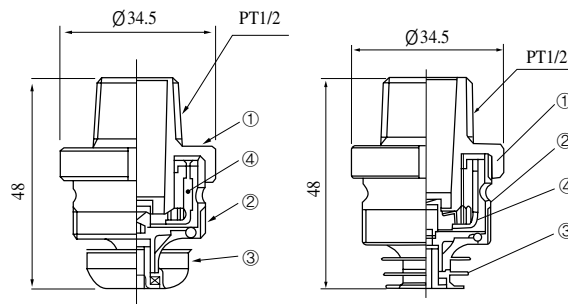
Operation

Flush type sprinkler uses special alloy fuse. As the temperature reaches the working temperature, the heat collector located at the bottom is separated and the in-body deflector is automatically extruded to start spraying of water.

Specification

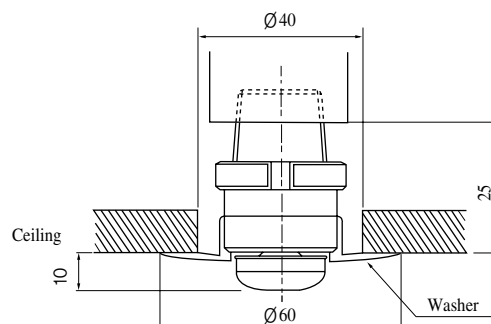
Model No.	FH721-1 / FH721-2	FH722-1 / FH722-2
Working Temperature	72°C	105°C
Max. Ambient Temperature	39°C	67°C
Surface Finishing	Nickel-Chrome Plated.	
Connection Screw Size	15A (PT 1/2 ")	
Orifice Size	Ø 11.3mm	
Test Pressure	25kgf/cm ²	
Flow Rate	80ℓ /min-1kgf/cm ² (K=80)	
Weight	11.5kg/Box	
Packaging	100Ea	

Assembly Diagram



NO	Part	Material
1	Body	Forged Brass
2	Frame	Brass
3	Heat Collector	Brass
4	Deflector	Copper

Installation Diagram



Sprinkler



FH741(742)EQR



FH741(742)

Features

New flush type sprinkler minimizes the extrusion from the ceiling, further improving the outlook, along with the advantages of existing flush type sprinkler. Heat detection part has been improved for faster response time and discharge radius has been increased to 2.6m, contributing to greater protection range.

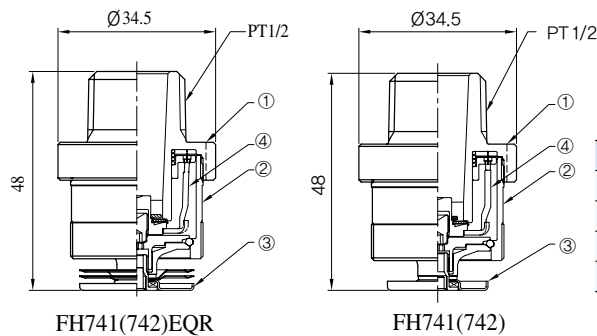
Operation

New flush type sprinkler uses special alloy fuse. As the temperature reaches the working temperature, the heat collector located at the bottom is separated and the in-body deflector is automatically extruded to start spraying of water.

Specification

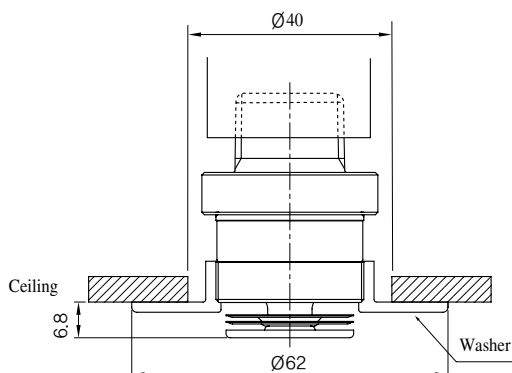
Model No.	FH741EQR	FH742EQR	FH741	FH742
Working Temperature	72°C	105°C	72°C	105°C
Max. Ambient Temperature	39°C	67°C	39°C	67°C
Response Speed	Fast Response		Standard Response	
Discharge Radius	r 2.6m		r 2.3m	
Surface Finishing	Nickel-Chrome Plated			
Connection Screw Size	15A (PT 1/2 ")			
Orifice Size	ø 11.3mm			
Test Pressure	25kgf/cm ²			
Flow Rate	80ℓ /min-1kgf/cm ² (K=80)			
Weight	11.5kg/Box			
Packaging	100Ea			

Assembly Diagram



NO	Part	Material
1	Body	Forged Brass
2	Frame	Brass
3	Heat Collector	Copper
4	Deflector	Copper

Installation Diagram



Sprinkler



Flush Type

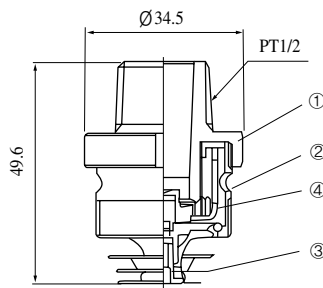
Operation

Same as the operating mechanism of standard type sprinkler.

Specification

Model No.	FH721-2QR	FH722-2QR
Working Temperature	72°C	105°C
Max. Ambient Temperature	39°C	67°C
Surface Finishing	Nickel-Chrome Plated	
Connection Screw Size	15A (PT 1/2 ")	
Orifice Size	Ø 11.3mm	
Test Pressure	25 kgf/cm ²	
Flow Rate	80ℓ /min-1 kgf/cm ² (K=80)	
Weight	11.5kg/Box	
Packaging	100Ea	

Assembly Diagram



NO	Part	Material
1	Body	Forged Brass
2	Frame	Brass
3	Heat Collector	Copper
4	Deflector	Copper

Installation Diagram

